

**POWELL BILL ELIGIBLE STREETS**

NAME	MILEAGE	SURFACE
1. CAVE SPRINGS ROAD	0.87	HARD SURFACED
2. MEIGS WAY	0.03	HARD SURFACED
3. MEIGS WAY	0.26	GRAVEL SURFACED
4. LABRADOR LANE	0.05	HARD SURFACED
5. NORTH COUNTRY CLUB DRIVE	0.95	HARD SURFACED
6. OAK FOREST DRIVE	0.04	HARD SURFACED
7. PIN CUSHION LANE	0.04	HARD SURFACED
8. SOUTH COUNTRY CLUB DRIVE	0.69	HARD SURFACED
9. VIRGINIA LANE	0.08	HARD SURFACED
TOTAL = 3.01 MILES		

**NON-ELIGIBLE STREETS**

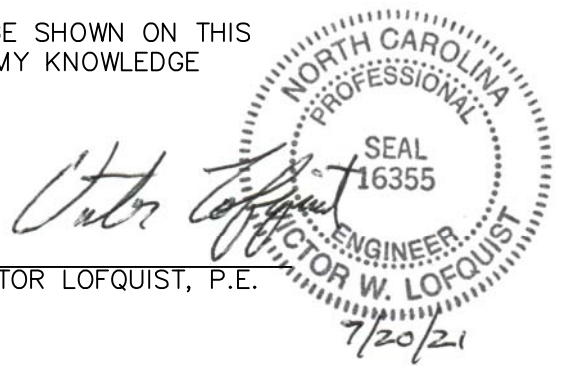
NAME	MILEAGE	SURFACE
10. POPPY LANE*	0.07	HARD SURFACED
11. SAXONY TRAIL*	0.03	HARD SURFACED
12. TEAPOT RIDGE*	0.03	HARD SURFACED
TOTAL = 0.13 MILES		

\*STREET WILL BE ELIGIBLE UPON ACQUIREMENT OF RIGHT-OF-WAY

**NEW STREETS, OR PORTIONS THEREOF ADDED AND/OR DELETED FROM THE MUNICIPAL SYSTEM**

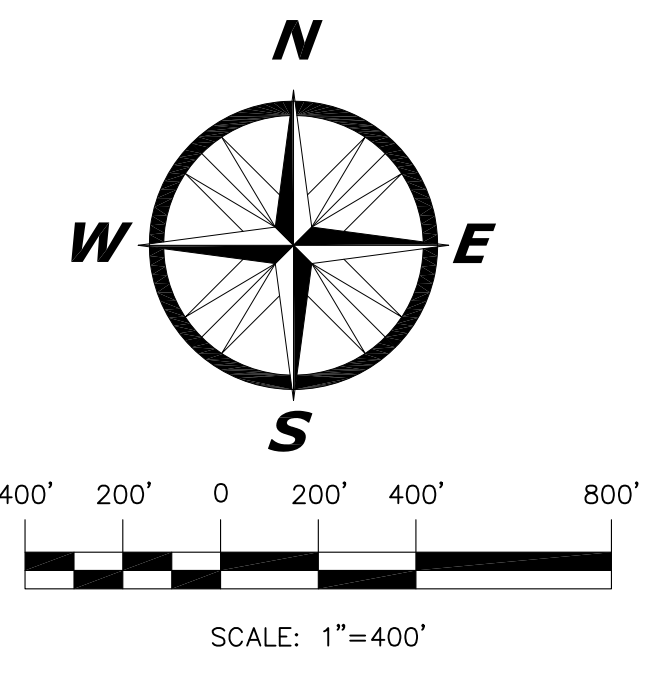
NOTE: NO MILEAGE ADDED OR DELETED FOR FY 2021-2022. VILLAGE REQUESTED WEST BRANCH OF CAVE SPRINGS ROAD BE RE-NAMED MEIGS WAY.

I HEREBY CERTIFY THAT THE MILEAGE SHOWN ON THIS MAP IS CORRECT TO THE BEST OF MY KNOWLEDGE AND BELIEF.



**LEGEND**

- STATE ROAD SYSTEM (Pink line)
- PRIVATE ROAD: ALL TYPES (Light blue line)
- INCORPORATED MUNICIPAL AREA (Yellow shaded area)
- EXTRATERRITORIAL JURISDICTION LIMITS (Dashed black line)
- ELIGIBLE MUNICIPAL STREETS**
  - ASPHALT SURFACED (Cyan line)
  - CONCRETE SURFACE (Green line)
  - SOIL, STONE, GRAVEL (Brown line)
- NON-ELIGIBLE MUNICIPAL STREETS**
  - ALL TYPE SURFACES (Orange line)



**VILLAGE OF FOREST HILLS**  
**FY 2021-2022**  
**POWELL BILL MAP**

**Lofquist & Associates, Inc.**  
 PLANNING ENGINEERING DESIGN  
 11 Citrus Drive Sylva, NC 28779 (828) 586-1424 (828) 586-3480 Fax Firm License No.: C-2288